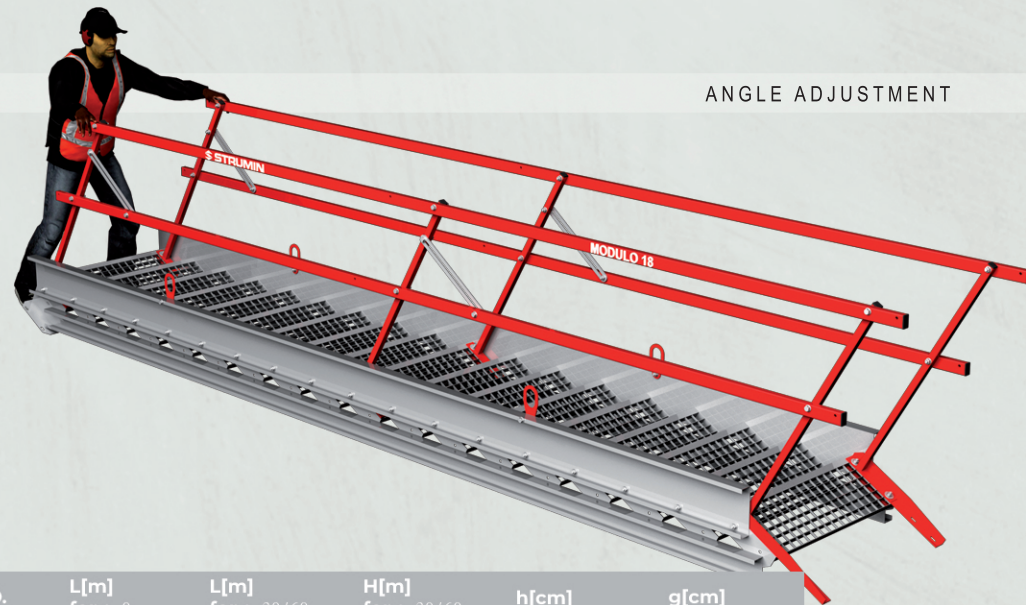
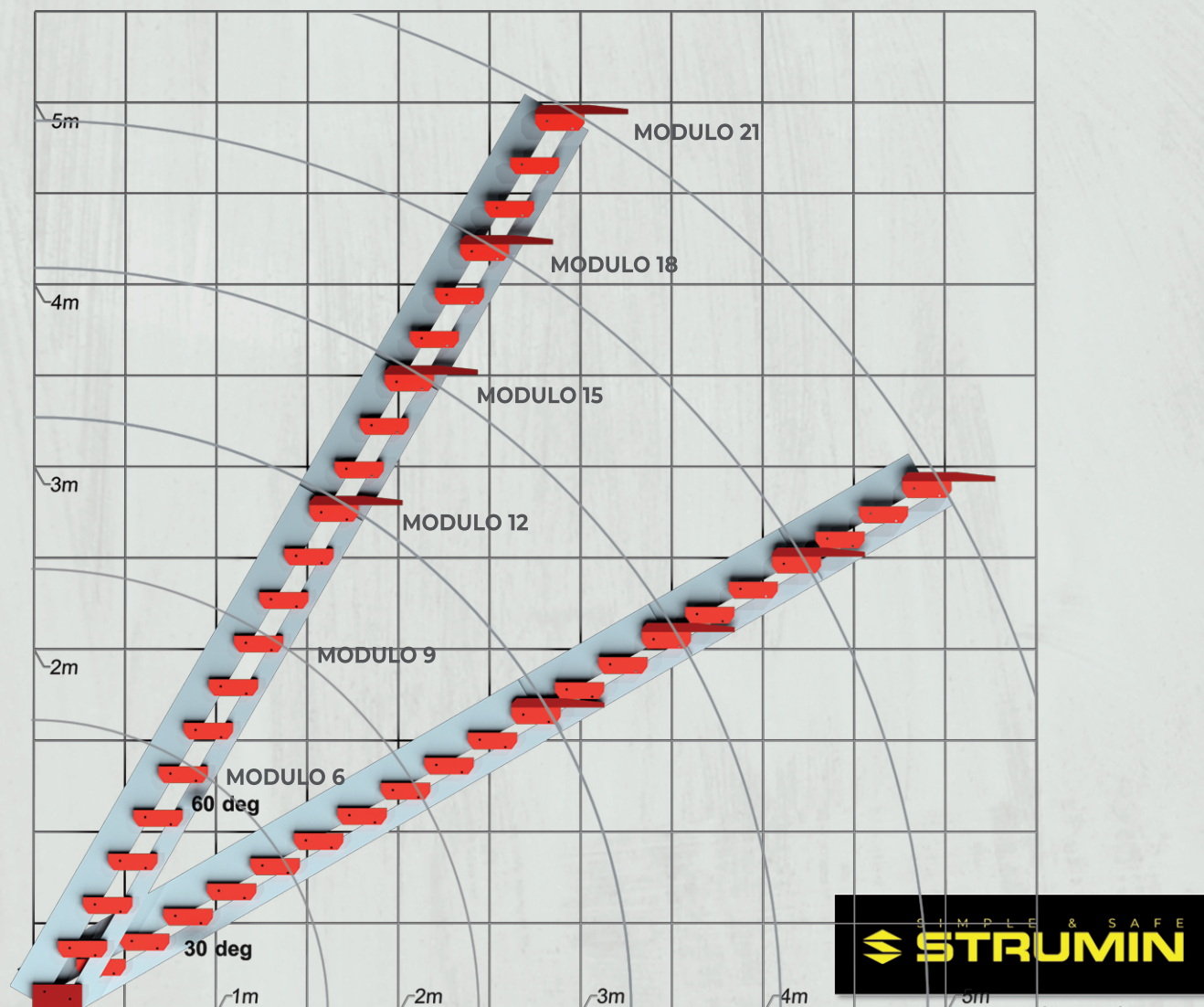




Stairways **MODULO N**



NAME	CAT. NO.	L[m] for $\alpha=0$	L[m] for $\alpha=30/60$	H[m] for $\alpha=30/60$	h[cm]	g[cm]
MODULO 6	1101	1,7	1,5 / 1,0	1,0 / 1,4	13,7 / 23,8	23,8 / 13,7
MODULO 9	1102	2,5	2,2 / 1,4	1,3 / 2,1	13,7 / 23,8	23,8 / 13,7
MODULO 12	1103	3,3	2,9 / 1,8	1,7 / 2,8	13,7 / 23,8	23,8 / 13,7
MODULO 15	1104	4,1	3,6 / 2,2	2,1 / 3,5	13,7 / 23,8	23,8 / 13,7
MODULO 18	1105	4,9	4,3 / 2,6	2,5 / 4,2	13,7 / 23,8	23,8 / 13,7
MODULO 21	1106	5,8	5 / 3	2,9 / 4,9	13,7 / 23,8	23,8 / 13,7



32-084 MORAWICA 191
tel.: +48 571 870 100
centrala@strumin.pl

STAIRWAYS

MODULO N

Information

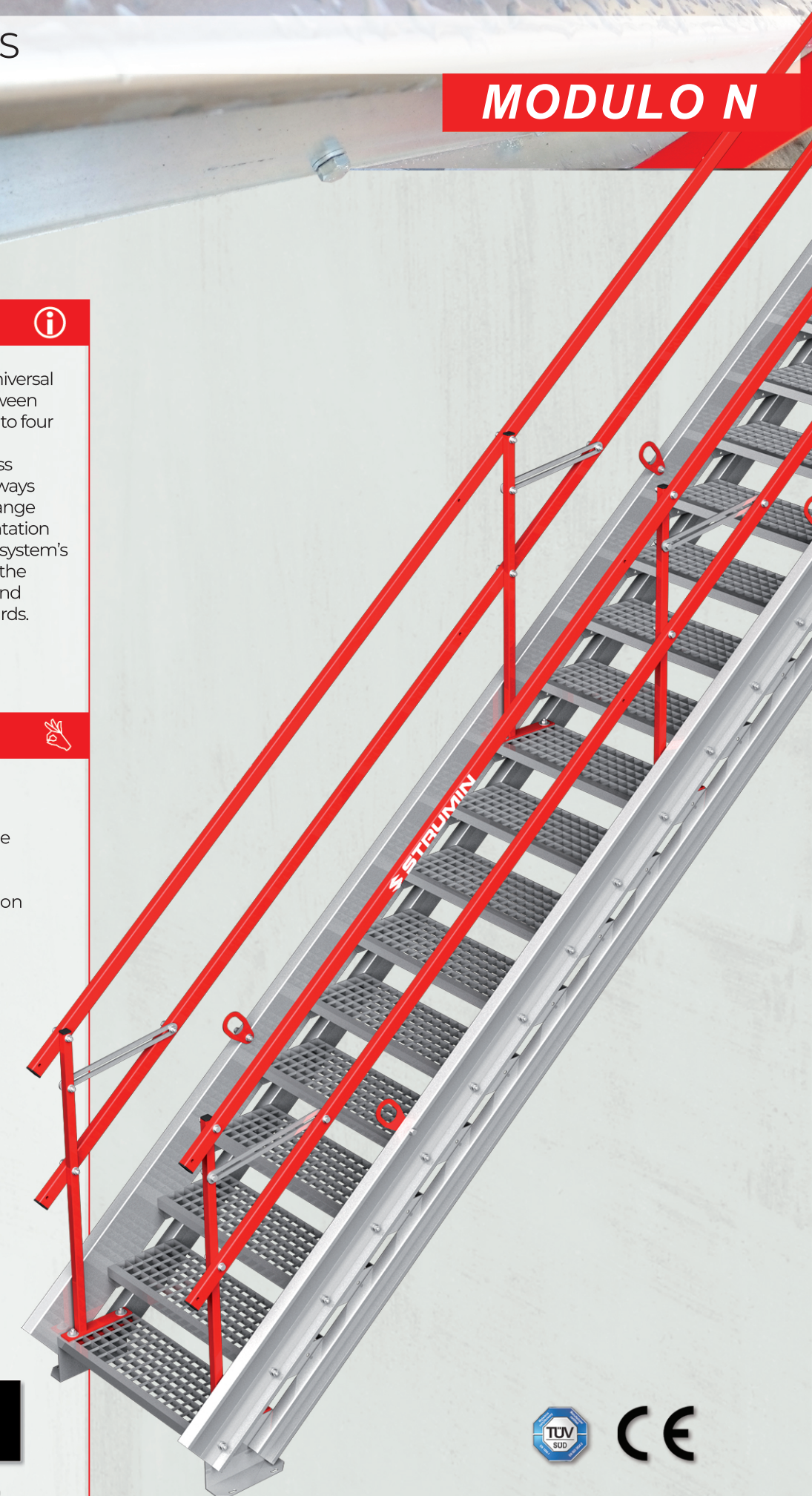
Construction site stairways are universal devices providing safe move between floors at construction sites. Thanks to four available sizes and smooth angle regulation, they provide the access to any working level. Folded stairways may be used as a bridge with a range of 5.7 m. Thanks to the implementation of high, cold-formed profiles, the system's project provide high durability of the construction and does not demand any additional support or toe boards.

Advantages

- universal system
- different available lengths
- a stairway and a bridge in one
- anti-slip
- galvanized construction
- simple and intuitive installation
- compliance with applicable safety norms
- certified

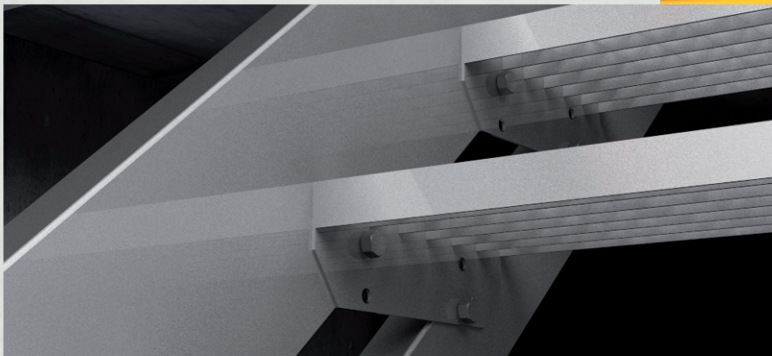


32-084 MORAWICA 191
tel.: +48 571 870 100
centrala@strumin.pl



- modular system
- available in 3, 6, 9, 12, 15, 18 and 21 steps modules
- a stairway and a bridge in one
- integrated railing
- anti-slip steps
- galvanized construction
- easy and intuitive installation
- quick and durable assembly with reusable screws inserted in concrete
- ease of storing and transporting

Automatically positioned side foot and upper part of the stairways



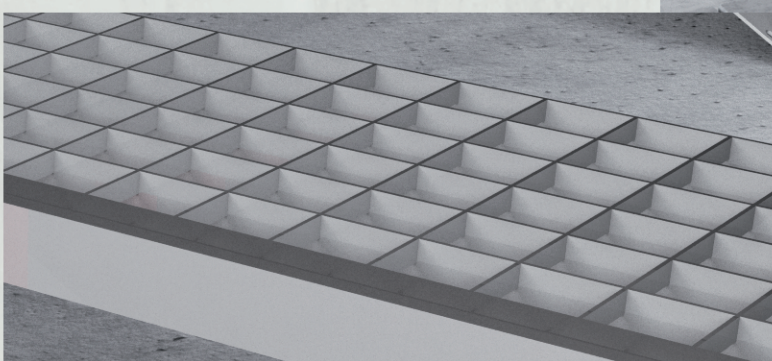
Supporting beam serves as a toe board



Railing joined to the steps, angle adjustment



Supporting beams and steps made of hot dip galvanized steel



Anti-slip steps

